

# STORM EGRESS

Emergency Exit for  
Commercial Applications

## STORM EGRESS HEAVY DUTY EGRESS FRICTION HINGES FOR COMMERCIAL APPLICATIONS

- Allows casement windows to open to a full 90° for emergency exit
- Unrivalled weather sealing
- Capable of achieving high gust loading
- Austenitic 304\* stainless steel throughout
- Superior carrying capacity
- 10 year guarantee (details available upon request)

The Storm hinge range has been designed to achieve the requirements of AAMA 101/I.S.2 - 97, specifically high gust load rating. Storm also benefits from excellent weathersealing from its unique asymmetric metal point and cap as well as smooth reliable operation.

Full technical and sales support which will cover consultancy per project basis and on-site advice when necessary.

▼ **STEEL END LOCATOR**  
A stainless steel end cap automatically directs the end point smoothly and firmly towards the closed position



▼ **INCREASED STRENGTH**  
Self lubricating nylon coated stainless steel support plate giving increased strength

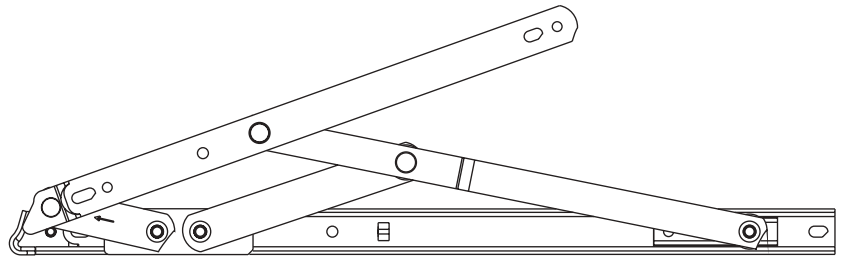
▲ **HEAVY DUTY FRICTION SLIDERS**  
Stainless steel composite sliders to give maximum strength yet perform with the smoothest of action



\* Austenitic (was 304) stainless steel to BS EN ISO 10088/2 Grade 1.4301 for enhanced corrosion resistance.

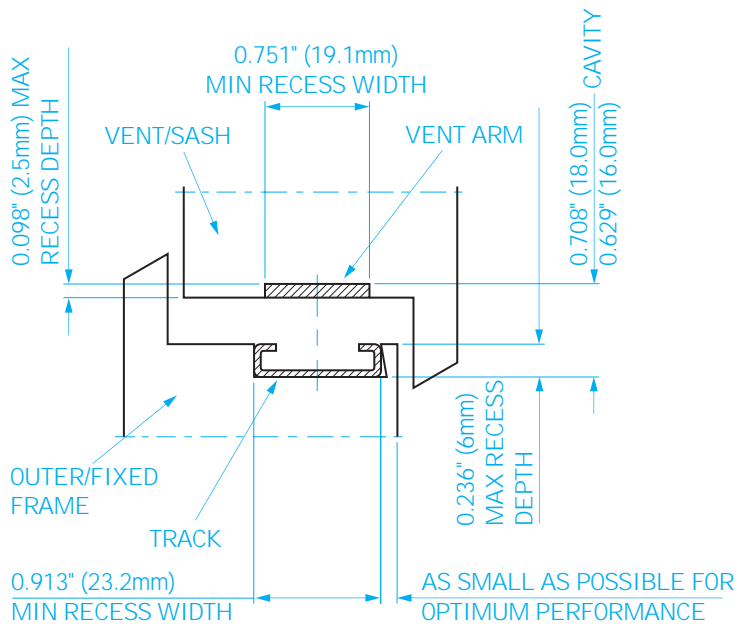
# STORM EGRESS

## Product Specification



### PRODUCT SPECIFICATION

- Available in 16" casement
- Standard, offset and highline variants available
- Composite slider



#### STORM EGRESS

Hinge Code	Max Vent Weight (lb/Kg)	Max Vent Width (in/mm)	Min Vent Width (in/mm)	Hinge Length (in/mm)	Opening Angle (+/- 2.5°)
Storm16	103/47	33/838	18/450	16.34/415	90°



Due to our policy of continual improvement we reserve the right to alter specifications without notice. It is the responsibility of the window manufacturer to ensure that the finished window meets the required performance and safety specification.

All transactions are subject to our standard conditions of supply, which are available on request.